

# Discharge Measurement Summary

**Site name** Sodhouse2  
**Site number** 06  
**Operator(s)** TMiller  
**File name** Sodhouse2\_20230519-131057.ft  
**Comment**

<b>Start time</b>	5/19/2023 12:15 PM	<b>Sensor type</b>	Top Setting
<b>End time</b>	5/19/2023 1:08 PM	<b>Handheld serial number</b>	FT2H2219029
<b>Start location latitude</b>	43.250	<b>Probe serial number</b>	FT2P2219014
<b>Start location longitude</b>	-118.859	<b>Probe firmware</b>	1.30
<b>Calculations engine</b>	FlowTracker2	<b>Handheld software</b>	1.7

<b># Stations</b>	<b>Avg interval (s)</b>	<b>Total discharge (m<sup>3</sup>/s)</b>
19	40	0.8758

<b>Total width (m)</b>	<b>Total area (m<sup>2</sup>)</b>	<b>Wetted Perimeter (m)</b>
4.785	2.93341	5.319

<b>Mean SNR (dB)</b>	<b>Mean depth (m)</b>	<b>Mean velocity (m/s)</b>
51	0.613	0.2986

<b>Mean temp (°C)</b>	<b>Max depth (m)</b>	<b>Max velocity (m/s)</b>
16.404	1.012	0.4598

Discharge Uncertainty		
Category	ISO	IVE
Accuracy	1.0%	1.0%
Depth	0.1%	1.1%
Velocity	0.4%	5.6%
Width	0.1%	0.1%
Method	1.0%	
# Stations	2.6%	
Overall	3.0%	5.8%

<b>Discharge equation</b>	Mid Section
<b>Discharge uncertainty</b>	IVE
<b>Discharge reference</b>	Rated

Data Collection Settings	
<b>Salinity</b>	0.000 PSS-78
<b>Temperature</b>	-
<b>Sound speed</b>	-
<b>Mounting correction</b>	0.000 %

## Summary overview

No changes were made to this file  
Quality control warnings



# Discharge Measurement Summary

**Site name** Sodhouse2  
**Site number** 06  
**Operator(s)** TMiller  
**File name** Sodhouse2\_20230519-131057.ft  
**Comment**

## Station Warning Settings

**Station discharge OK**

Station discharge < 5.00%

**Station discharge caution**

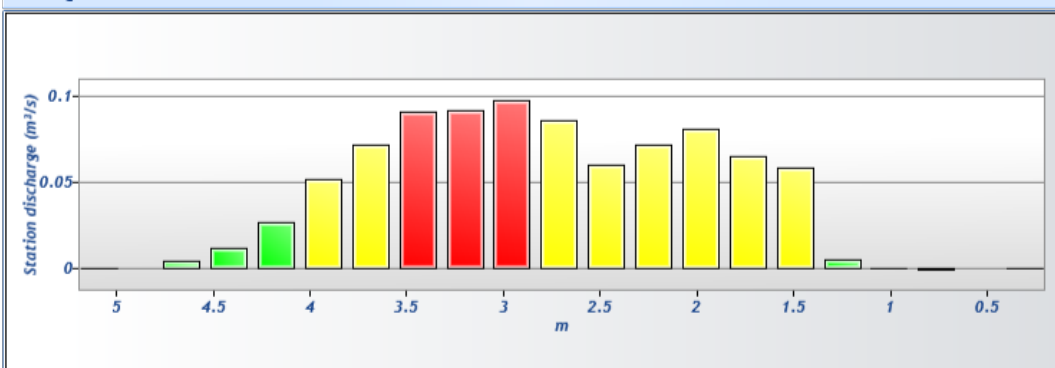
5.00% >= Station discharge < 10.00%

**Station discharge warning**

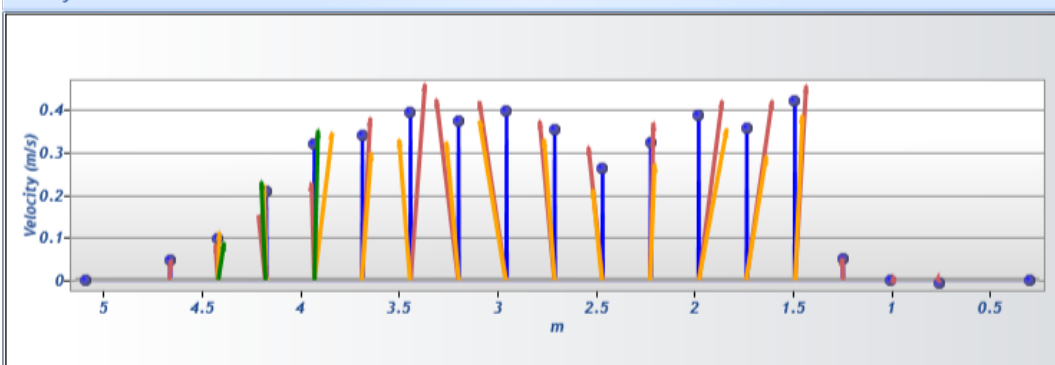
Station discharge >= 10.00%



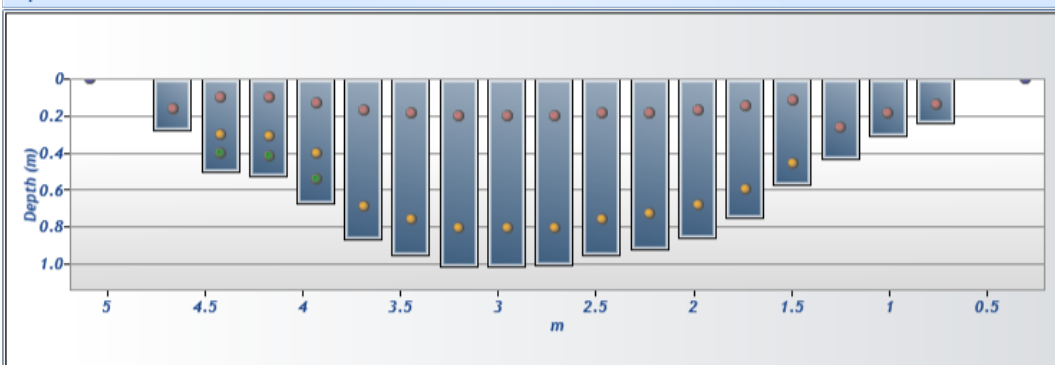
Discharge chart

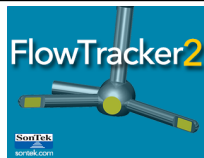


Velocity chart



Depth chart



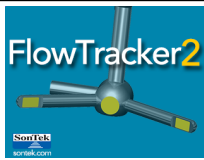


# Discharge Measurement Summary

**Site name** Sodhouse2  
**Site number** 06  
**Operator(s)** TMiller  
**File name** Sodhouse2\_20230519-131057.ft  
**Comment**

## Measurement results

St#	Time	Location (m)	Method	Depth (m)	%Depth	Measured Depth (m)	Samples	Velocity (m/s)	Correction	Mean Velocity (m/s)	Area (m <sup>2</sup> )	Flow (m <sup>3</sup> /s)	%Q	
0	12:15 PM	0.305	None	0.000	0.0000	0.000	0	0.0000	1.0000	-0.0065	0.00000	0.0000	0.00	✓
1	12:16 PM	0.762	0.6	0.238	0.6000	0.143	80	-0.0065	1.0000	-0.0065	0.08333	-0.0005	-0.06	✓
2	12:18 PM	1.006	0.6	0.305	0.6000	0.183	80	-0.0014	1.0000	-0.0014	0.07432	-0.0001	-0.01	✓
3	12:20 PM	1.250	0.6	0.433	0.6000	0.260	80	0.0518	1.0000	0.0518	0.10554	0.0055	0.62	✓
4	12:21 PM	1.494	0.2/0.8	0.573	0.2000	0.115	80	0.4562	1.0000	0.4211	0.13973	0.0588	6.72	✓
4	12:21 PM	1.494	0.2/0.8	0.573	0.8000	0.458	80	0.3860	1.0000	0.4211	0.13973	0.0588	6.72	✓
5	12:24 PM	1.737	0.2/0.8	0.747	0.2000	0.149	80	0.4206	1.0000	0.3559	0.18209	0.0648	7.40	✓
5	12:24 PM	1.737	0.2/0.8	0.747	0.8000	0.597	80	0.2913	1.0000	0.3559	0.18209	0.0648	7.40	✓
6	12:27 PM	1.981	0.2/0.8	0.853	0.2000	0.171	80	0.4208	1.0000	0.3880	0.20810	0.0807	9.22	✓
6	12:27 PM	1.981	0.2/0.8	0.853	0.8000	0.683	80	0.3552	1.0000	0.3880	0.20810	0.0807	9.22	✓
7	12:30 PM	2.225	0.2/0.8	0.914	0.2000	0.183	80	0.3694	1.0000	0.3212	0.22297	0.0716	8.18	✓
7	12:30 PM	2.225	0.2/0.8	0.914	0.8000	0.732	80	0.2730	1.0000	0.3212	0.22297	0.0716	8.18	✓
8	12:33 PM	2.469	0.2/0.8	0.948	0.2000	0.190	80	0.3122	1.0000	0.2619	0.23114	0.0605	6.91	✓
8	12:33 PM	2.469	0.2/0.8	0.948	0.8000	0.758	80	0.2116	1.0000	0.2619	0.23114	0.0605	6.91	✓
9	12:36 PM	2.713	0.2/0.8	1.003	0.2000	0.201	80	0.3732	1.0000	0.3522	0.24452	0.0861	9.83	✓
9	12:36 PM	2.713	0.2/0.8	1.003	0.8000	0.802	80	0.3311	1.0000	0.3522	0.24452	0.0861	9.83	✓
10	12:39 PM	2.957	0.2/0.8	1.012	0.2000	0.202	80	0.4196	1.0000	0.3969	0.24675	0.0979	11.18	✓
10	12:39 PM	2.957	0.2/0.8	1.012	0.8000	0.810	80	0.3742	1.0000	0.3969	0.24675	0.0979	11.18	✓
11	12:42 PM	3.200	0.2/0.8	1.012	0.2000	0.202	80	0.4239	1.0000	0.3739	0.24675	0.0923	10.53	✓
11	12:42 PM	3.200	0.2/0.8	1.012	0.8000	0.810	80	0.3239	1.0000	0.3739	0.24675	0.0923	10.53	✓
12	12:45 PM	3.444	0.2/0.8	0.948	0.2000	0.190	80	0.4598	1.0000	0.3949	0.23114	0.0913	10.42	✓
12	12:45 PM	3.444	0.2/0.8	0.948	0.8000	0.758	80	0.3300	1.0000	0.3949	0.23114	0.0913	10.42	✓
13	12:48 PM	3.688	0.2/0.8	0.866	0.2000	0.173	80	0.3808	1.0000	0.3397	0.21108	0.0717	8.19	✓
13	12:48 PM	3.688	0.2/0.8	0.866	0.8000	0.693	80	0.2986	1.0000	0.3397	0.21108	0.0717	8.19	✓
14	12:53 PM	3.932	0.2/0.6/0.8	0.674	0.2000	0.135	80	0.2284	1.0000	0.3179	0.16425	0.0522	5.96	✓
14	12:53 PM	3.932	0.2/0.6/0.8	0.674	0.6000	0.404	80	0.3458	1.0000	0.3179	0.16425	0.0522	5.96	✓
14	12:53 PM	3.932	0.2/0.6/0.8	0.674	0.8000	0.539	80	0.3514	1.0000	0.3179	0.16425	0.0522	5.96	✓
15	12:57 PM	4.176	0.2/0.6/0.8	0.521	0.2000	0.104	80	0.1526	1.0000	0.2075	0.12709	0.0264	3.01	✓
15	12:57 PM	4.176	0.2/0.6/0.8	0.521	0.6000	0.313	80	0.2234	1.0000	0.2075	0.12709	0.0264	3.01	✓
15	12:57 PM	4.176	0.2/0.6/0.8	0.521	0.8000	0.417	80	0.2306	1.0000	0.2075	0.12709	0.0264	3.01	✓
16	1:02 PM	4.420	0.2/0.6/0.8	0.503	0.2000	0.101	80	0.0836	1.0000	0.0990	0.12263	0.0121	1.39	✓
16	1:02 PM	4.420	0.2/0.6/0.8	0.503	0.6000	0.302	80	0.1126	1.0000	0.0990	0.12263	0.0121	1.39	✓
16	1:02 PM	4.420	0.2/0.6/0.8	0.503	0.8000	0.402	80	0.0870	1.0000	0.0990	0.12263	0.0121	1.39	✓
17	1:05 PM	4.663	0.6	0.274	0.6000	0.165	80	0.0479	1.0000	0.0479	0.09197	0.0044	0.50	✓
18	1:08 PM	5.090	None	0.000	0.0000	0.000	0	0.0000		0.0479	0.00000	0.0000	0.00	✓



# Discharge Measurement Summary

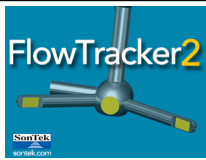
**Site name** Sodhouse2  
**Site number** 06  
**Operator(s)** TMiller  
**File name** Sodhouse2\_20230519-131057.ft  
**Comment**

## Quality Control Settings

**Maximum depth change** 50.00%  
**Maximum spacing change** 100.00%  
**SNR threshold** 10 dB  
**Standard error threshold** 0.0100 m/s  
**Spike threshold** 10.00%  
**Maximum velocity angle** 20.0 deg  
**Maximum tilt angle** 5.0 deg

## Quality control warnings

St#	Time	Location (m)	Method	Depth (m)	%Depth	Measured Depth (m)	Warnings
6	12:27 PM	1.981	0.2/0.8	0.853	0.2000	0.171	Velocity Angle > QC
6	12:27 PM	1.981	0.2/0.8	0.853	0.8000	0.683	Velocity Angle > QC
7	12:30 PM	2.225	0.2/0.8	0.914	0.2000	0.183	Standard Error > QC
7	12:30 PM	2.225	0.2/0.8	0.914	0.8000	0.732	Standard Error > QC
9	12:36 PM	2.713	0.2/0.8	1.003	0.2000	0.201	Standard Error > QC
9	12:36 PM	2.713	0.2/0.8	1.003	0.8000	0.802	Standard Error > QC
10	12:39 PM	2.957	0.2/0.8	1.012	0.2000	0.202	High Stn % Discharge
10	12:39 PM	2.957	0.2/0.8	1.012	0.8000	0.810	High Stn % Discharge
11	12:42 PM	3.200	0.2/0.8	1.012	0.2000	0.202	High Stn % Discharge
11	12:42 PM	3.200	0.2/0.8	1.012	0.8000	0.810	High Stn % Discharge
12	12:45 PM	3.444	0.2/0.8	0.948	0.2000	0.190	High Stn % Discharge
12	12:45 PM	3.444	0.2/0.8	0.948	0.8000	0.758	High Stn % Discharge
18	1:08 PM	5.090	None	0.000	0.0000	0.000	Water Depth > QC

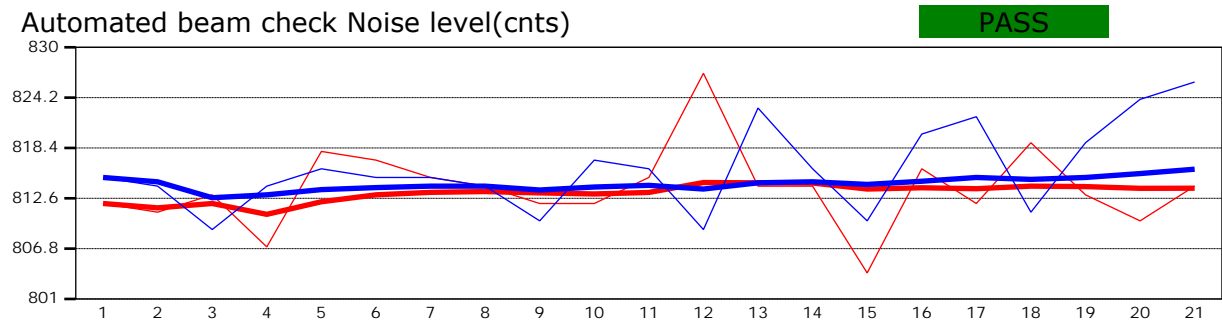
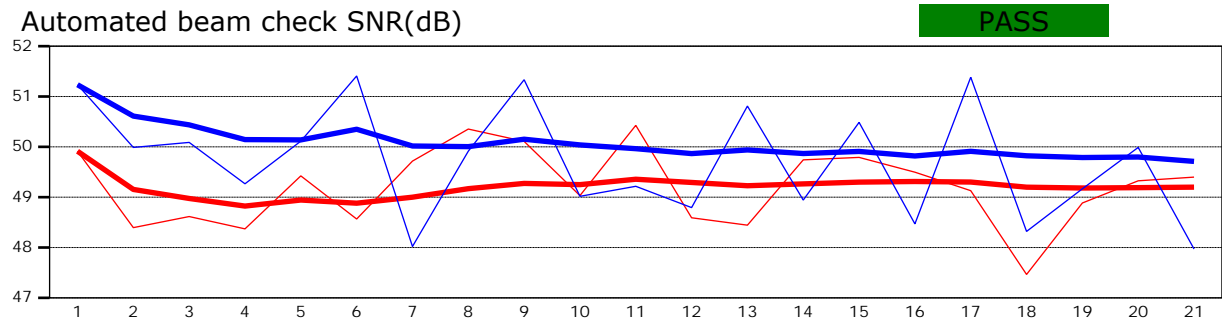


# Discharge Measurement Summary

**Site name** Sodhouse2  
**Site number** 06  
**Operator(s)** TMiller  
**File name** Sodhouse2\_20230519-131057.ft  
**Comment**

<b>Beam 1</b>	
<b>Beam 2</b>	

Automated beam check Start time 5/19/2023 12:15:33 PM



**Automated beam check Quality control warnings**  
No quality control warnings



# Discharge Measurement Summary

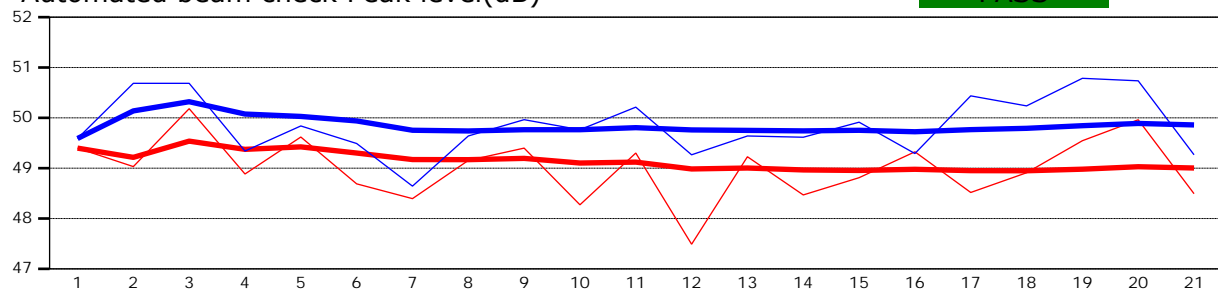
**Site name** Sodhouse2  
**Site number** 06  
**Operator(s)** TMiller  
**File name** Sodhouse2\_20230519-131057.ft  
**Comment**

<b>Beam 1</b>	
<b>Beam 2</b>	

Automated beam check Start time 5/19/2023 12:15:33 PM

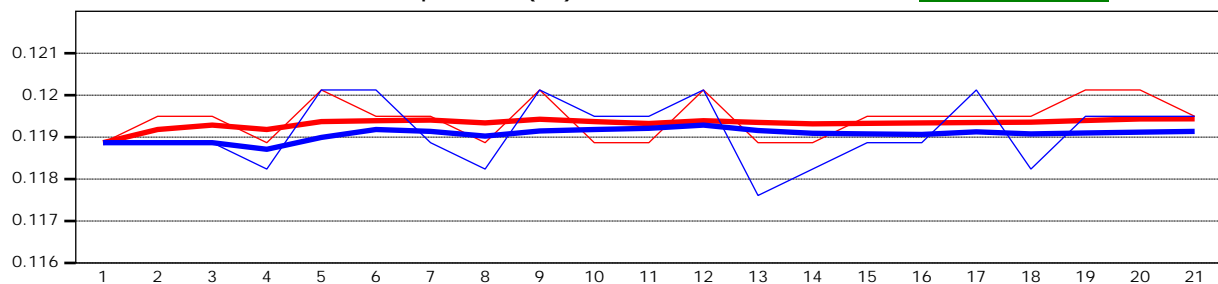
Automated beam check Peak level(dB)

**PASS**



Automated beam check Peak position(m)

**PASS**



## Automated beam check Quality control warnings

No quality control warnings